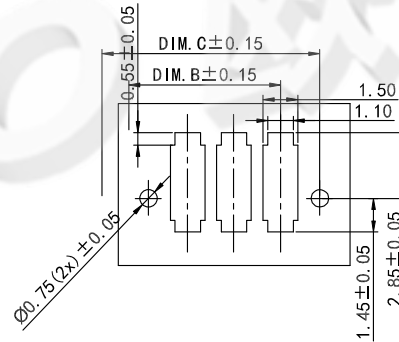
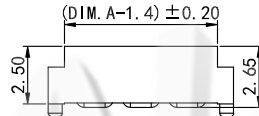
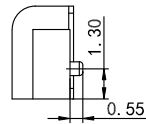
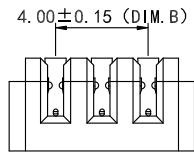
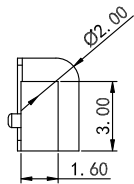
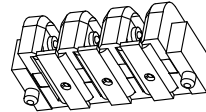
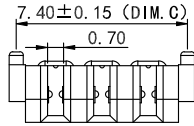
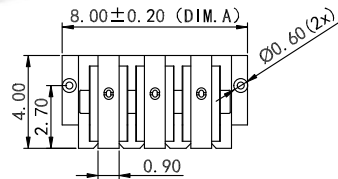


Rohs

REV.	DESCRIPTION	DRAW.	DATE.



RECOMMENDED P.C. BOARD LAYOUT



No.of Pins	Dimension		
	DIM.A	DIM.B	DIM.C
02	6.00	2.00	5.40
03	8.00	4.00	7.40
04	10.00	6.00	9.40
05	12.00	8.00	11.40
06	14.00	10.00	13.40
07	16.00	12.00	15.40
08	18.00	14.00	17.40
09	20.00	16.00	19.40
10	22.00	18.00	21.40

Material:
 Insulator : LCP(UL94V-0)
 Contact : Phosphor Bronze
 Contact Plated : Gold over Nickel or Tin
 Specification:
 Current Rating : 3A
 Instant Current : 5A
 Voltage Rating : 30V
 Contact Resistance : 30m Ω
 Insulation Resistance : 100M Ω
 Dielectric Voltage : 500V
 Operating Temperature : -25°~85°

AUGO

AUGO ELECTRONICS CO.,LTD.

COPYRIGHT RESERVED, PLEASE DO NOT COPY.

REV:	01	UNLESS OTHERWISE SPECIFIED, TOLERANCE:	TITLE:	BATTERY FEMALE 2.0PITCH BOARD TO BOARD CONNECTOR	DESIGN	G.C.CHEN	DATE	
SIZE:	A4			X.	±0.20	DRAWING	Y.C.ZHANG	DATE
SCALE: 1:1	UNIT: mm	X.x	±0.15	PART NO:	CHECK	D.J.WANG	DATE	
SHEET: 1/1		X.xx	±0.10		SCALE	1:1	PAGE	1 OF 1
		ANGULAR	±2°					