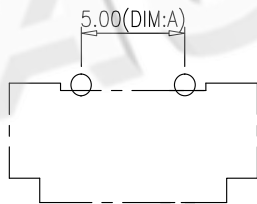
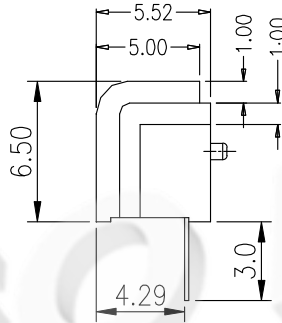
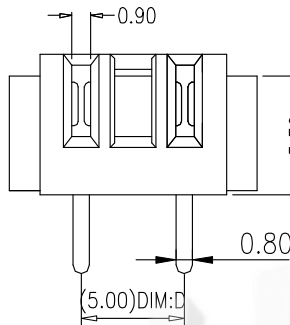
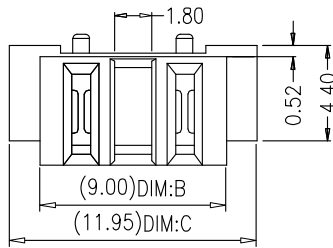


Rohs

REV.	DESCRIPTION	DRAW.	DATE.



Recommended P.C.B Lavout

Material:  
 Insulator : NYLON 9T (UL94V-0)  
 Contact : Phosphor Bronze  
 Contact Plated : Gold over Nickel or Tin  
 Specification:  
 Current Rating : 5A  
 Instant Current : 7A  
 Voltage Rating : 30V  
 Contact Resistance : 30m Ω  
 Insulation Resistance : 100M Ω  
 Dielectric Voltage : 500V  
 Operating Temperature : -25°~85°

**AUGO**

**AUGO ELECTRONICS CO.,LTD.**

COPYRIGHT RESERVED,PLEASE DO NOT COPY.

REV:	01	UNLESS OTHERWISE SPECIFIED,TOLERANCE:		TITLE:	BATTERY FEMALE 2.5 PITCH BOARD TO BOARD CONNECTOR	DESIGN	G.C.CHEN	DATE		
SIZE:	A4	X.	±0.20	PART NO:	AUGO-B02F-2P	DRAWING	Y.C.ZHANG	DATE		
SCALE: 1:1	UNIT: mm	X.x	±0.15			CHECK	D.J.WANG	DATE		
SHEET: 1/1		X.xx	±0.10			SCALE	1:1	PAGE	1 OF 1	
		ANGULAR	±2°							