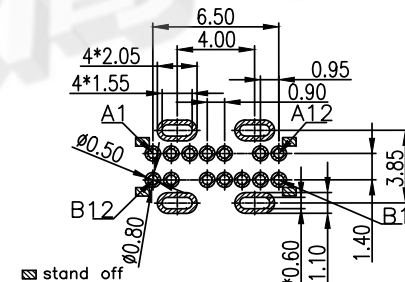
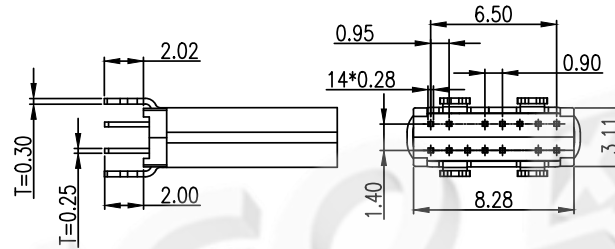
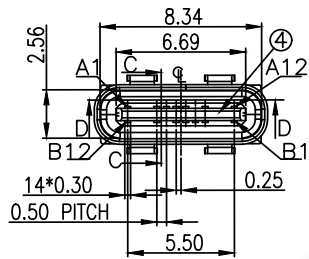
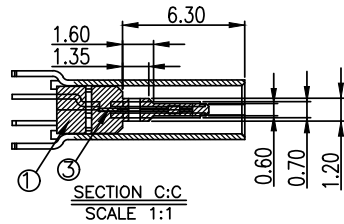
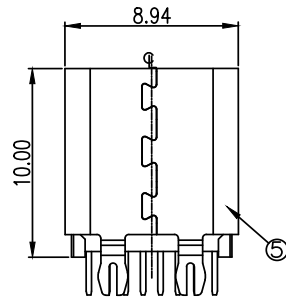
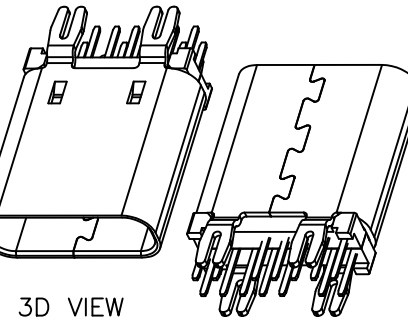


Rohs

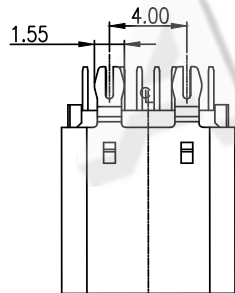
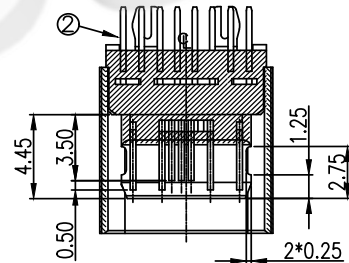
REV.	DESCRIPTION	DRAW.	DATE.

NOTES:

- ELECTRICAL REQUIREMENTS:
 - CURRENT RATING:3.0A MAX
 - VOLTAGE RATING:30VAC.
 - CONTACT RESISTANCE: 40 mΩ MAX.
AFTER DURABILITY: 50 mΩ MAX.
 - INSULATION RESISTANCE: 100 MΩ MIN.
 - WITHSTANDING STRENGTH: 100V AC FOR 1 MINUTE .
- MECHANICAL REQUIREMENTS:
 - INSERTION FORCE : 5N~20N
 - EXTRACTION FORCE: INITIAL: 8~20N
AFTER DURABILITY:6~20N
 - DURABILITY: 10,000 CYCLES
- ENVIRONMENTAL REQUIREMENTS:
 - OPERATING TEMPERATURE RANGE: -40°C~+80°C
 - STORAGE TEMPERATURE RANGE: -40°C~+80°C
- MATERIAL: SEE TABLE 1
- PLATING: SEE TABLE 1
- SOLDER ABILITY:260°C±5°C,5±0.5SECONDS



Recommend PCB Layout (Jack Top View)
Tolerance:±0.05mm
Recommend PCB Thickness: 1.2mm



A1	GND	B12	GND
/	/	/	/
/	/	/	/
A4	VBUS	B9	VBUS
A5	CC1	B8	SUB2
A6	DP1	B7	DN2
A7	DN1	B6	DP2
A8	SUB1	B5	CC2
A9	VBUS	B4	VBUS
/	/	/	/
/	/	/	/
A12	GND	B1	GND
PIN	SIGNAL NAME	PIN	SIGNAL NAME

NO.	DESCRIPTION	MATERIAL	COLORPLATING	QTY
5	SHELL	SUS 304 T=0.30 mm	Ni:80u"~120u"	1 PCS
4	IM 2	LCP UL94V-0	SEE TABLE 2	1 PCS
3	SHIELDING PLATE	SUS 304 T=0.20 mm	-----	1 PCS
2	CONTACT	C7025 T=0.15 mm	CONTACT Au:3u" WELDING Au:1u"Ni:80u" Min	2 SET
1	IM 1	LCP UL94V-0	SEE TABLE 2	1 PCS

AUGO

AUGO ELECTRONICS CO.,LTD.

COPYRIGHT RESERVED,PLEASE DO NOT COPY.

REV:	01
SIZE:	A4
SCALE: 1:1	UNIT: mm
SHEET: 1/1	⊕

UNLESS OTHERWISE SPECIFIED,TOLERANCE:	
X.	±0.20
X.x	±0.15
X.xx	±0.10
ANGULAR	±2°

TITLE:	TYPE-C SERIES
PART NO.:	TYPE-C 14PIN 立式全插DIP H10.0 鱼叉脚

DESIGN	H.Y.ZHU	DATE	
DRAWING	W.B.QIAO	DATE	
CHECK	G.C.CHEN	DATE	
SCALE	1:1	PAGE	1 OF 1